



# Measuring Angles with a Protractor

Grade 5

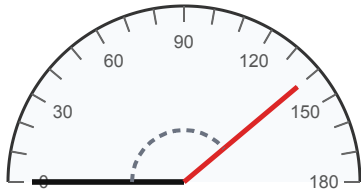
Name: \_\_\_\_\_

Measure the angle using a protractor.

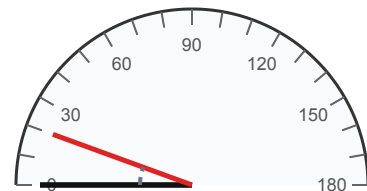
Read the number on the protractor where the other ray crosses. Make sure to read the correct scale (inner or outer).

**Example:** The angle is 60°

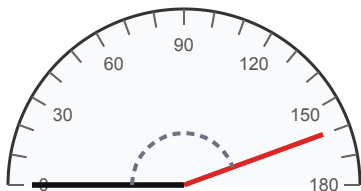
(1) Measure this angle in degrees.



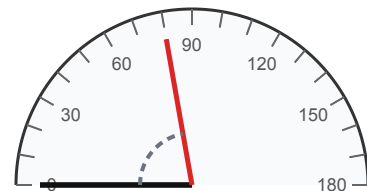
(2) Use the protractor to find the angle measure.



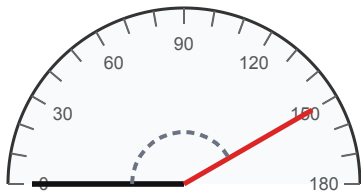
(3) What is the measure of this angle?



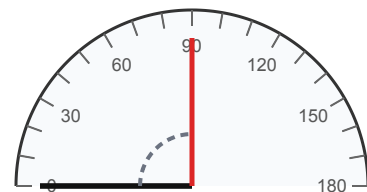
(4) Read the angle in degrees from the protractor.



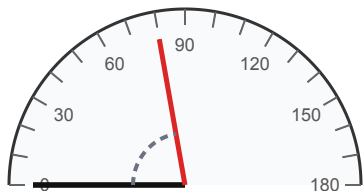
(5) Measure this angle in degrees.



(6) Use the protractor to find the angle measure.



(7) What is the measure of this angle?



(8) Read the angle in degrees from the protractor.

