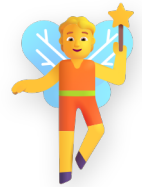




Read the fable carefully. Then answer each question below in a full sentence. Think about what the character learned and what lesson the fable is teaching. Use details from the story to support your answers.

## Leo and the Magic Axe



"Oh, if only this axe worked faster!" sighed Leo, a young woodcutter. He lived near the Whispering Woods. Leo worked hard, but his arms ached. He worried about selling enough wood.

One morning, resting, a tiny, shimmering fairy with dragonfly wings flew down. "Kind woodcutter," she chirped, "I see your effort. Take this axe; it will make your work light." She touched his old axe, and it glowed.



Leo picked up the axe. It felt lighter, and wood split easily! He cut much more. Soon, Leo relied only on the magic. He swung lazily, expecting the axe to do everything. The sweet smell of pine filled the air.



One day, the axe felt heavy. The glow was gone. Leo realized magic worked best with his own effort. He learned that true help comes when you help yourself. Hard work is rewarding.

### COMPREHENSION QUESTIONS

(1) Who is the main character in the story, and where does he live?

---

---

---



**(2) What problem did Leo face before the fairy appeared?**

---

---

---

**(3) What does it mean that Leo "relied" only on the magic?**

---

---

---

**(4) Was Leo's choice to rely only on the magic axe a good one? Use a detail from the story to explain your answer.**

---

---

---

**(5) What lesson does this story teach? How could this lesson help you in real life?**

---

---

---

