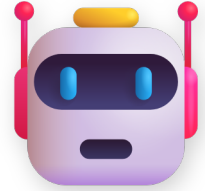


Read the story carefully. Then answer each question in a full sentence.

## Robo-Rover's Puddle Problem

Robo-Rover hummed along the sidewalk, its mission clear: deliver art supplies to Maya's house. The friendly robot, a box on wheels, followed its digital map. Green lights blinked as it neared her gate. Maya watched from her window, excited for new paintbrushes.



Suddenly, Robo-Rover stopped. A small, shiny puddle of rainwater blocked its path. The robot's advanced sensors detected the water. Its programming was strict: avoid all obstacles to protect the package. Robo-Rover paused, waiting for the puddle to disappear.



Maya frowned. Robo-Rover was smart, but stuck. Her art project was due tomorrow, and she needed those supplies! The robot's rules were good, but this puddle wasn't dangerous. It just needed a different kind of thinking.

Maya hurried outside. "Come on, Robo-Rover!" she said gently. She saw a tiny leaf floating in the puddle, right in the robot's way. She carefully scooped out the leaf. The robot beeped, its sensors now showing a clear path.



With the path clear, Robo-Rover whirred and rolled to Maya's door. She took her package, smiling. Maya understood that robots are amazing helpers, but sometimes human common sense and a little help make all the difference.

### COMPREHENSION QUESTIONS

(1) Who is the main character in the story, and where is she at the beginning?



---

---

---

**(2) What caused Robo-Rover to stop on the sidewalk?**

---

---

---

**(3) In the story, what does the word "sensors" mean for Robo-Rover?**

---

---

---

**(4) How did Maya feel when Robo-Rover got stuck, and what did she do to show her feelings?**

---

---

---

**(5) What lesson does Maya learn about robots and human help in this story?**

---

---

---

