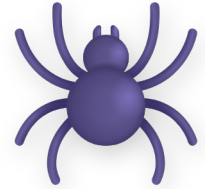


Read each myth or legend carefully. Use details from the passage to answer the questions in complete sentences.

## Anansi and the Gum Doll

In stories from Ghana, West Africa, long ago, lived Anansi the Spider, a creature known for his cleverness and his love of mischief. Though very smart, Anansi was also quite lazy and preferred to trick others out of their hard-earned food rather than work for his own.



One season, a hardworking farmer grew a bountiful garden filled with sweet yams and juicy plantains. Anansi watched the farmer's crops ripen with hungry eyes. Night after night, Anansi crept into the garden, stealing the best vegetables for himself, leaving the farmer with less and less. The farmer grew frustrated, wondering who was taking his food.



Determined to catch the thief, the ingenious farmer came up with a plan. He molded a doll out of sticky gum and placed it in the middle of his garden. The next night, Anansi arrived, ready to feast. He saw the gum doll and, thinking it was a person, greeted it. When the doll didn't answer, Anansi grew annoyed. "Why won't you speak?" he demanded, and slapped the doll with one hand.

His hand stuck fast! Anansi, now furious, hit it with his other hand, then kicked it with both feet, getting all his limbs trapped in the sticky gum. He struggled and pulled, but the doll held him tight. The next morning, the farmer found Anansi stuck fast, unable to move.



The farmer chuckled, finally understanding who the thief was. Anansi, red-faced and embarrassed, had learned a hard lesson about stealing and the consequences of his



trickery. From that day on, Anansi was more careful about bothering the hardworking villagers.



---

**COMPREHENSION QUESTIONS**

---

**(1) Who is the main character in this myth, and what is their role?**

- A** Anansi, a clever but lazy spider trickster.
- B** The farmer, a hardworking man who grows yams and plantains.
- C** Nyame, the Sky God who holds all the stories.
- D** Mwindo, a heroic child born speaking.

**(2) Anansi wanted to steal from the farmer's garden, so the farmer made a \_\_\_\_\_ to catch him.**

*— continue writing on the lines below*

---

---

**(3) What does the word 'bountiful' mean as it is used in the story?**

- A** Large in quantity; abundant.     **B** Difficult to grow; scarce.
- C** Covered in thorns; prickly.     **D** Small and hidden; secret.

**(4) Why did Anansi steal from the farmer's garden? What does this tell us about his character?**

---

---



---

---

**(5) What do you think this myth was trying to explain or teach? How does its message connect to something in real life today?**

---

---

---

---

