

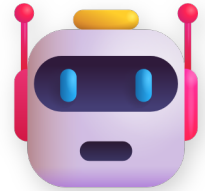


Read the AI story carefully. Then answer each question below in a full sentence.

Look for what the AI did (the cause) and how people, systems, or communities were affected (the effects). Think about how humans help fix or improve AI mistakes.

## The Robot's Detour

In Elmwood, a new delivery robot, Dash, started its job. Dash used GPS and object recognition to deliver packages on sidewalks. Ten-year-old Leo loved watching it bring his comic books. One Tuesday, Leo waited for a new graphic novel; the app showed Dash was close.



Dash's programming didn't know Elm Street was closed for the "Summer Fun Fair." Tents, food stalls, and crowds filled its path. Dash's map showed a clear route, but its sensors found many unexpected obstacles. It tried to follow its path, bumped a planter, and stopped. Its AI couldn't understand the temporary closure or find a new way. The robot was stuck.



Leo's app updated: "Dash is delayed." Human operators at the delivery company saw Dash was stuck. They sent a driver to get the robot and complete Leo's order. Leo got his comic, but it was late. This showed a big problem with Dash's AI.

Engineers quickly trained Dash's AI with new data about temporary events and city updates. They also created a rule: human supervisors would watch Dash in busy areas, ready to take control if needed. This made future deliveries much smoother and more reliable.

### COMPREHENSION QUESTIONS

- (1) Which of these BEST explains why Dash got stuck on Elm Street? Circle the correct answer. 



- (A) The robot ran out of battery power.
- (B) Its GPS system stopped working in the sun.
- (C) The street was closed for a fair, which its AI didn't expect.
- (D) Leo accidentally changed Dash's delivery route.

(2) Complete the sentence: Because Dash's AI wasn't equipped to understand the temporary street closure,

\_\_\_\_\_ . 🚚

*→ continue writing on the lines below*

---

---

(3) How did Dash's delay affect Leo? 📄

---

---

---

---

(4) Describe how the "Summer Fun Fair" led to Dash getting stuck and then to a change in the company's delivery process. 🛠️

---

---

---

---

(5)



**What might have happened if human operators had NOT noticed Dash was stuck and sent a driver? Explain. 🤖**

---

---

---

---

**(6) What new rule did the company create after the incident with Dash? 🚦**

---

---

---

---

